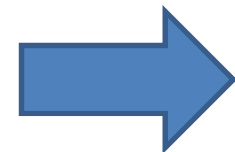
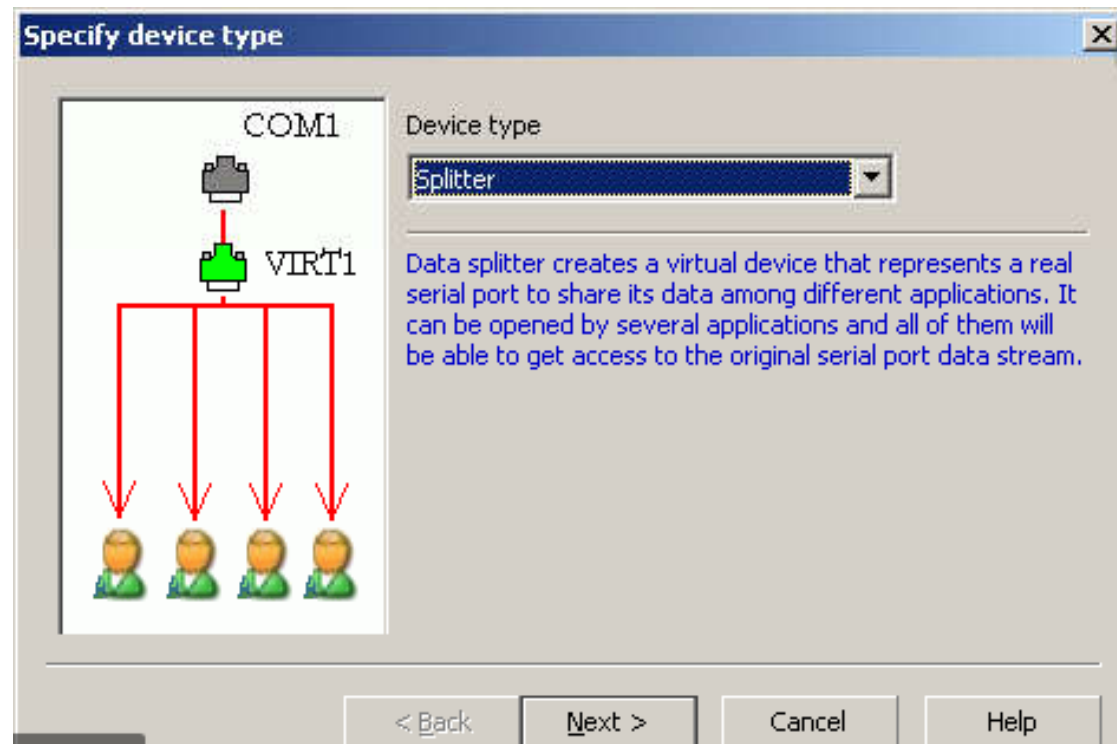


# INSTALLATION DE VSPE

<http://www.eterlogic.com/Products.VSPE.html>




8 GO ROUGE (E:) > MATIN PRESENTATION DES DEFIS > présentation de VREP > SetupVSPE

Nom	Modifié le	Type	Taille
License	11/10/2009 02:02	Classeur OpenOffi...	6 Ko
SetupVSPE	26/06/2010 23:26	Package Windows...	3 426 Ko
version	26/06/2010 23:26	Document texte	1 Ko
VSPE_API_32_KEY	26/06/2010 23:26	Document texte	2 Ko

Accès rapide  
Images  
Bureau  
présentation de VRE  
seminaireguerledan  
OneDrive

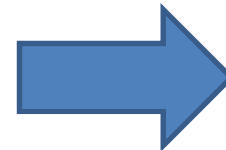
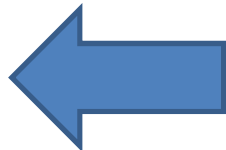
Virtual Serial Ports Emulator Setup



### Welcome to the Virtual Serial Ports Emulator Setup Wizard

The Setup Wizard will install Virtual Serial Ports Emulator on your computer. Click Next to continue or Cancel to exit the Setup Wizard.

Back Next Cancel



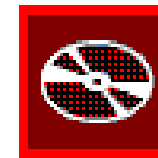


Virtual Serial Ports Emulator Setup



## End-User License Agreement

Please read the following license agreement carefully



You should carefully read the following terms and conditions before using this software. If you do not agree with the terms of this license, you must remove "Free Virtual Serial Port Emulator" from your computer.

### 32 bit FREeware LICENSE AGREEMENT

BY DOWNLOADING, INSTALLING OR USING THE "FREE VIRTUAL SERIAL PORTS EMULATOR" (THE "PRODUCT"), THE INDIVIDUAL OR ENTITY LICENSING THE PRODUCT ("LICENSEE") IS CONSENTING TO BE BOUND BY AND IS BECOMING A PARTY TO THIS AGREEMENT. IF LICENSEE DOES NOT AGREE TO ALL OF THE

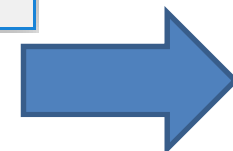
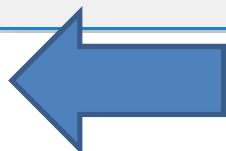
I accept the terms in the License Agreement

Print

Back

Next

Cancel



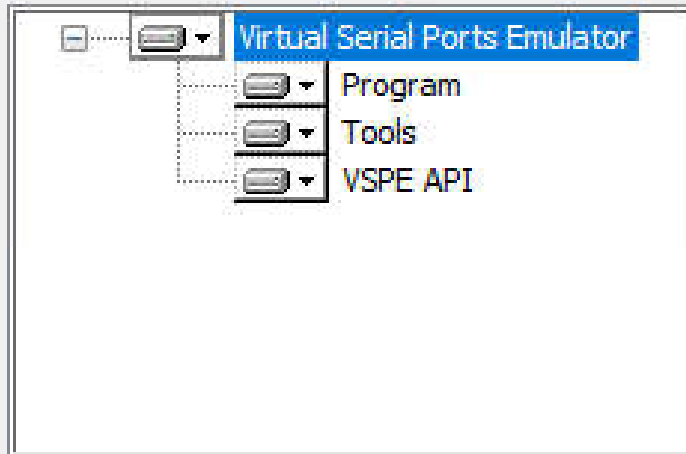
Virtual Serial Ports Emulator Setup

## Custom Setup

Select the way you want features to be installed.



Click the icons in the tree below to change the way features will be installed.



The complete package.

This feature requires 0KB on your hard drive. It has 3 of 3 subfeatures selected. The subfeatures require 5889KB on your hard drive.

Location: C:\Program Files (x86)\Eterlogic.com\Virtual Serial Ports Emulator\

Browse...

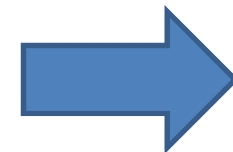
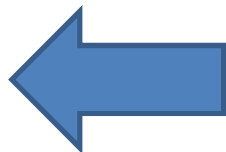
Reset

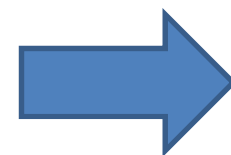
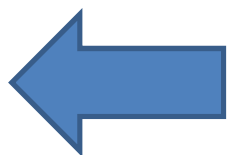
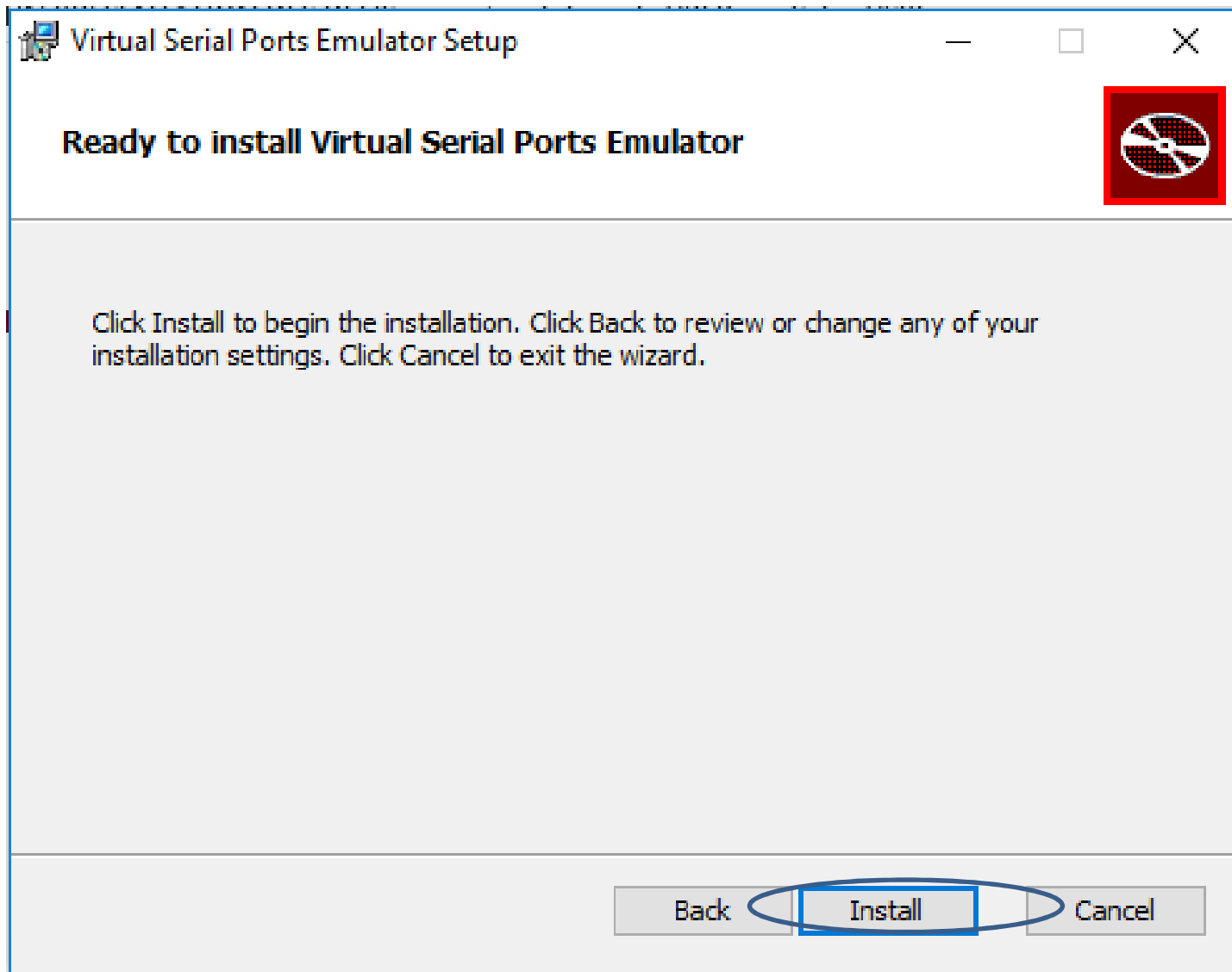
Disk Usage

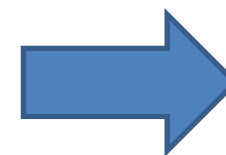
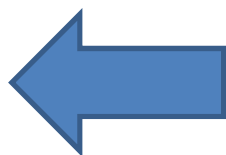
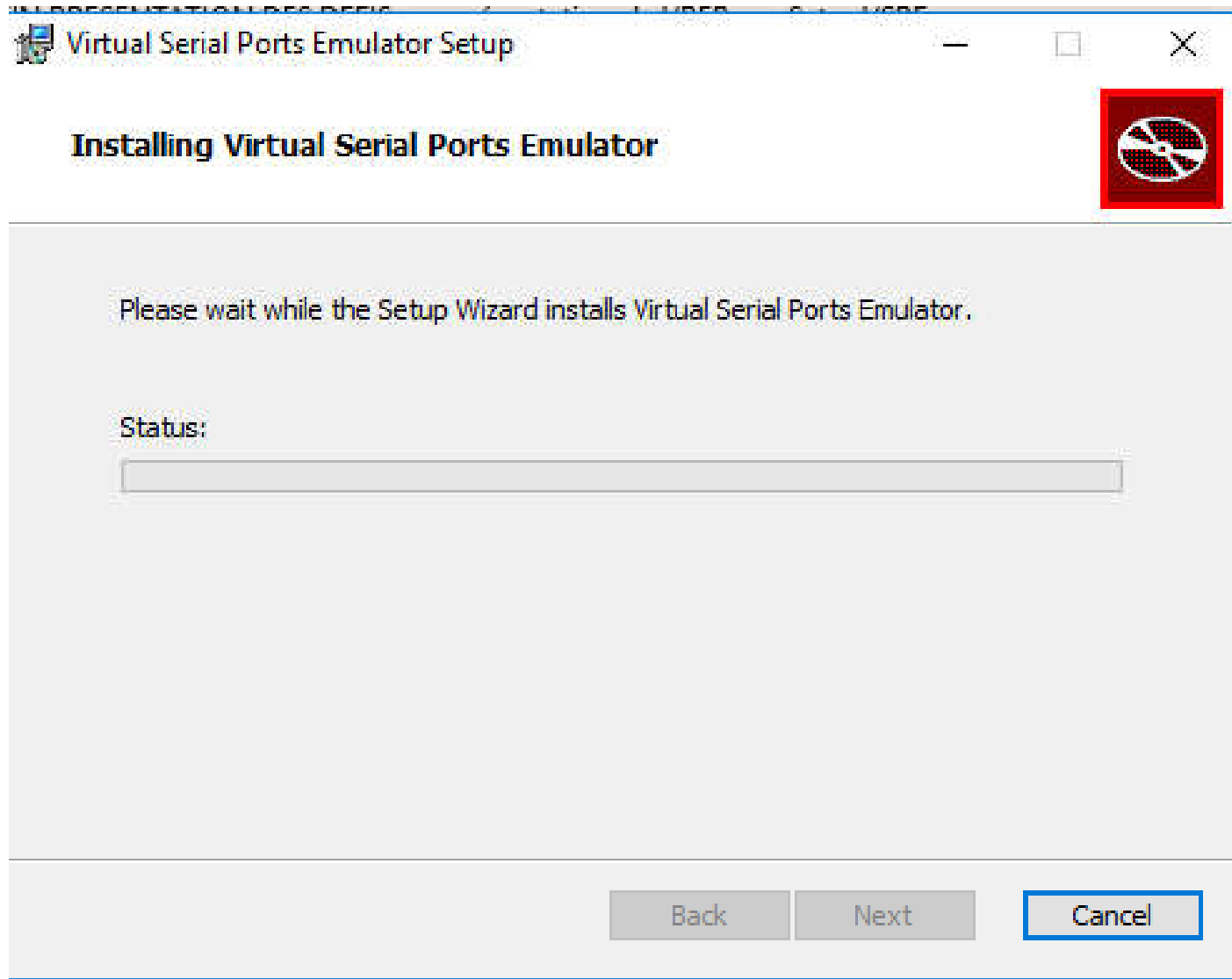
Back

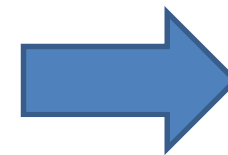
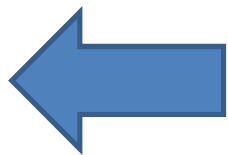
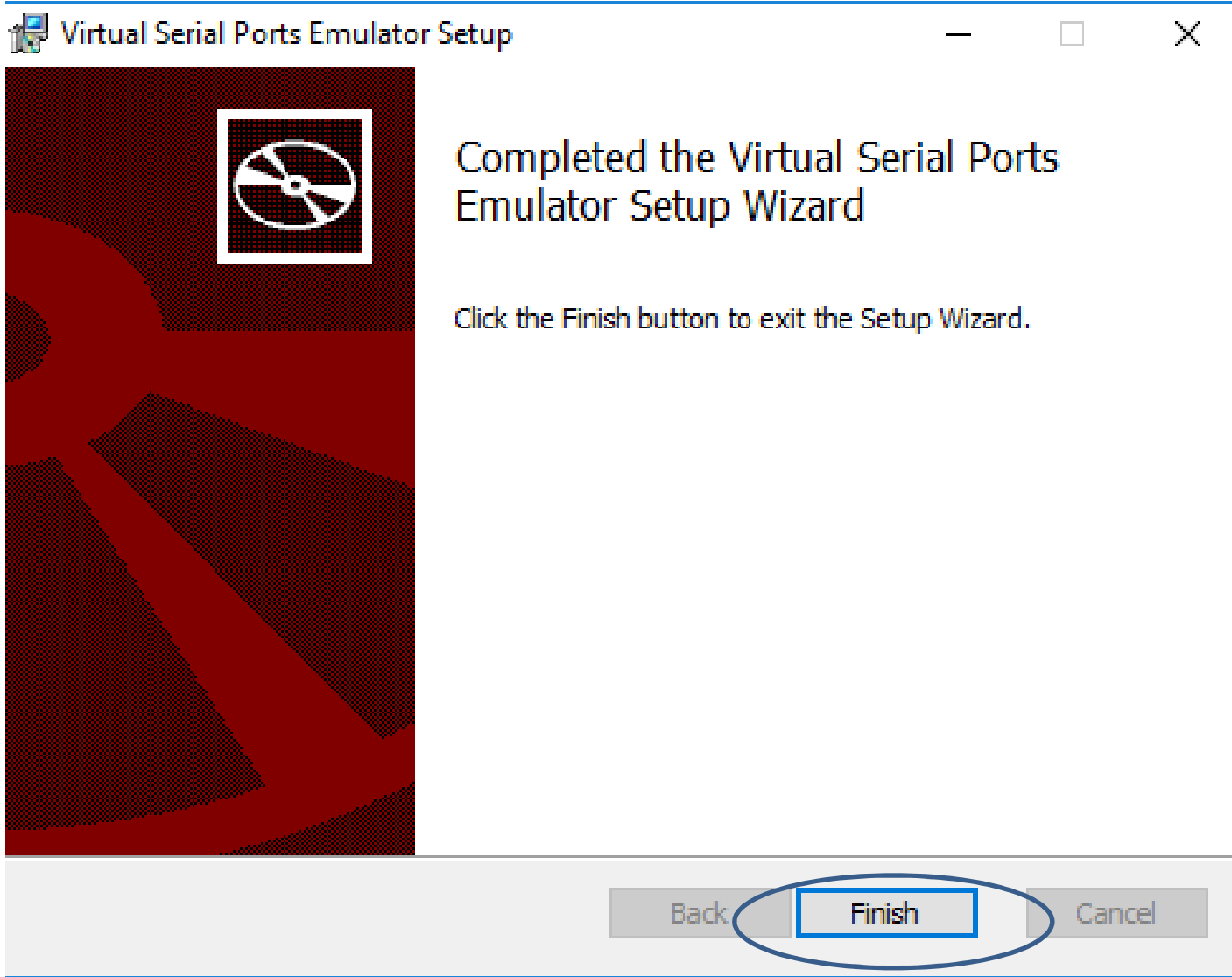
Next

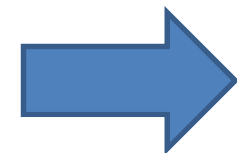
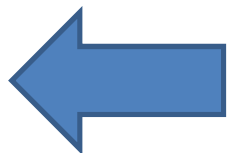
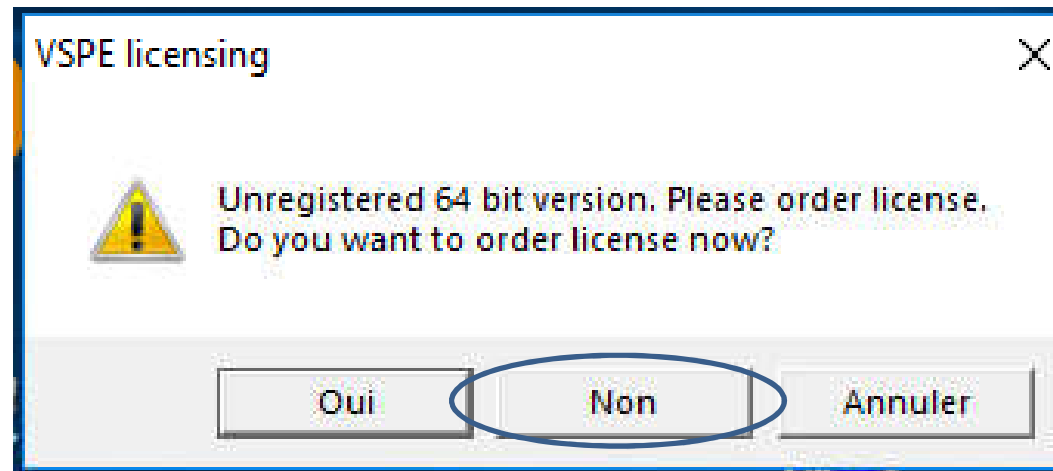
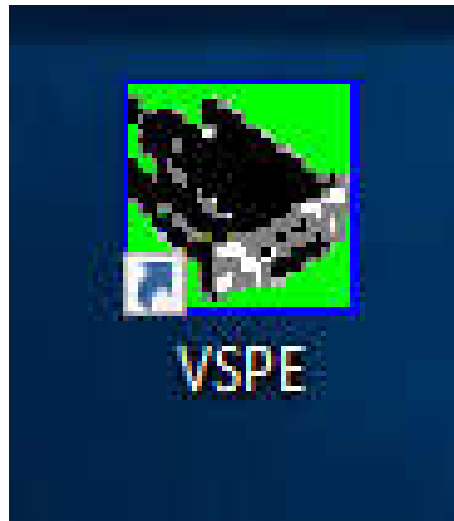
Cancel















## Specify device type



Device type

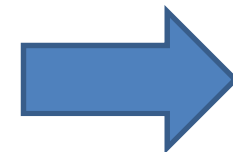
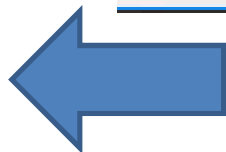
Connector

Unlike regular serial port, connector is a virtual device that can be opened twice. When opened, it creates data pipe between its clients. That allows separate applications use the same serial port to exchange data.

VIRT1

New serial port Existing serial port Client application

< Précédent Suivant > Annuler Aide



Specify device characteristics



Virtual serial port

COM1

Emulate baud rate (optional)

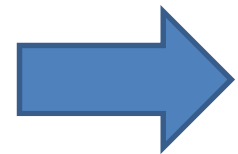
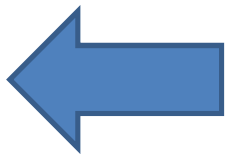
**EVITER LE COM 1 SOUVENT LA  
SOURIS OU LE CLAVIER USB**

< Précédent

Terminer

Annuler

Aide



Specify device characteristics



Virtual serial port

COM5

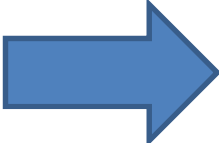
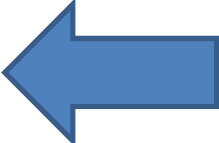
Emulate baud rate (optional)

< Précédent

Terminer

Annuler

Aide



Virtual Serial Ports Emulator (Emulation started)

File View Language Emulation Device Help

Icons: File Explorer, Save, Play (circled), Stop, Printer, Network, USB, Help, Hardware

Title	Device	Status
COM5	Connector	Ready

{Monday, December 02, 2019} [COM5] Initialization...OK

{Monday, December 02, 2019} [COM5] Initialization...OK

Ready <http://www.eterlogic.com>

